
**ISO  
Tolerances**

ON D: m6  
ON F: h9  
ON GA: 0  
-0.2

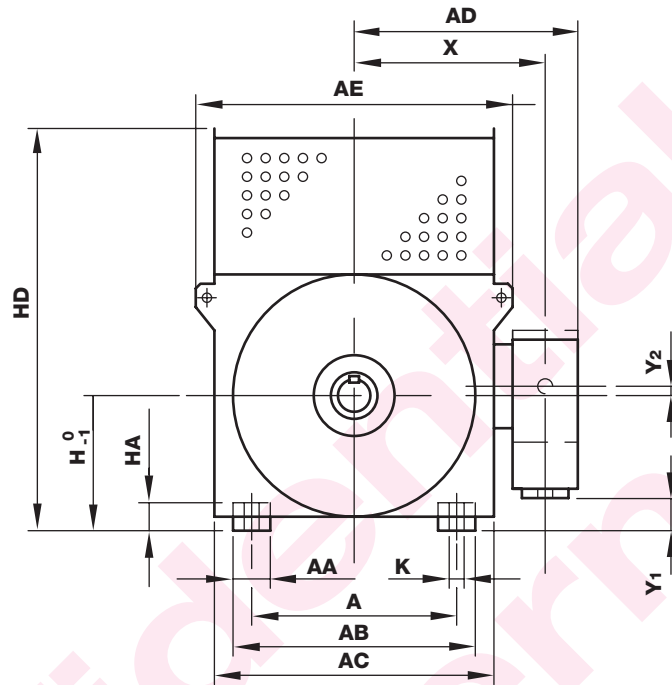
Dimensions in mm

Not binding dimensions

Larger sizes also available

Side view

FRAME	POLES	CORE LENGTH	BEARINGS	B	BB	BC	C	L	Z1	Z2
315	2	X	R	800	1025	-	216	1710	756	1231
		Y		900	1125			1810	806	1281
315	4 and more	X	R	800	1025	-	216	1740	786	1261
		Y		900	1125			1840	836	1311
355	2	W	R	800	1055	-	254	1990	794	1269
		Y		1000	1255			2190	894	1369
355	2	W	S	800	1055	-	355	2185	895	1370
		Y		1000	1255			2385	995	1470
355	4 and more	W	R	800	1055	-	254	1860	864	1339
		Y		1000	1255			2060	964	1439
400	2	Y	S	1120	1305	-	375	2540	1105	1580
		Y						R	280	2445
400	4 and more	W	R	900	1125	-	280	2095	940	1415
		Y		1120	1345			2315	1050	1525
450	2	W	S	1000	1235	-	400	2575	1070	1545
		Y		1250	1485			2825	1195	1670
450	2	W	R	1000	1235	-	315	2470	985	1470
		Y		1250	1485			2720	1110	1595
450	4 and more	W	R	1000	1265	-	315	2380	1025	1500
		Y		1250	1515			2630	1150	1625
500	2	W	S	1120	1355	-	400	2715	1130	1605
		Y		1400	1635			2995	1270	1745
500	4 and 6	W	R	1120	1385	-	335	2730	1145	1620
		Y		1400	1665			3010	1285	1760
500	4 and 6	W	S	1120	1385	-	450	2845	1260	1735
		Y		1400	1665			3125	1400	1875
500	8 and more	W	R	1120	1385	-	335	2630	1145	1620
		Y		1400	1665			2910	1285	1760
560	2	X	S	1400	1635	480	450	3155	1360	1835
		Y		1600	1835	545		3355	1460	1935
560	4	W	S	1250	1515	430	500	3135	1375	1850
		X		1400	1665	480		3285	1450	1925
560	4 and 6	Y	R	1600	1865	545	355	3485	1550	2025
		W		1250	1515	430		2850	1230	1705
560	4 and 6	X	R	1400	1665	480	355	3000	1305	1780
		Y		1600	1865	545		3200	1405	1880
560	8 and more	W	S	1250	1515	430	500	3135	1375	1850
		X		1400	1665	480		3285	1450	1925
560	8 and more	Y	R	1600	1865	545	355	3485	1550	2025
		W		1250	1515	430		2850	1230	1705
560	8 and more	X	R	1400	1665	480	355	3000	1305	1780
		Y		1600	1865	545		3200	1405	1880
630	2	X	S	1600	1875	545	450	3420	1460	1935
		Y		1800	2075	615		3620	1560	2035
630	4	X	S	1600	1895	545	530	3780	1580	2055
		Y		1800	2095	615		3980	1680	2155
630	6	X	R	1600	1895	545	375	3625	1425	1900
		Y		1800	2095	615		3825	1525	2000
630	8 and more	X	R	1600	1895	545	375	3190	1425	1900
		Y		1800	2095	615		3390	1525	2000



Front view

FRAME	POLES	A	AA	AB	AC	AD	AE	H	HA	HD	K	X	Y <sub>1</sub>	Y <sub>2</sub>
315	2	508	120	635	730	815	860	315	25	1070	35	590	125	35
	4 and more													
355	2	610	120	720	900	870	1050	355	35	1295	35	645	90	30
	4 and more													
400	2	686	120	820	1000	920	1170	400	45	1480	35	695	10	85
	4 and more								30					
450	2	750	130	920	1120	980	1310	450	45	1650	40	755	75	100
	4 and more								35					
500	2	850	130	1020	1250	1045	1440	500	45	1770	40	820	155	130
	4 and more								35					
560	2	1000	130	1170	1380	1110	1585	560	45	1985	40	885	255	170
	4 and more								35					
630	2	1180	130	1310	1570	1205	1790	630	45	2730	45	980	325	170
	4 and more								35					

Shaft extension

FRAME	POLES	D	E	F	GA
315	2	70	140	20	74.5
	4 and more	90	170	25	95
355	2	75	140	20	79.5
	4 and more	100	210	28	106
400	2	80	170	22	85
	4 and more	110	210	28	116
450	2	85	170	22	90
	4 and more	120	210	32	127
500	2	90	170	25	95
	4 and more	130	250	32	137
560	2	100	210	28	106
	4 and more	140	250	36	148
630	2	110	210	28	116
	4 and more	150	250	36	158

