



GP Series NAMUR Pilot Valves for Gemini Pneumatic Actuators

2 Otter Court, Raymond, New Hampshire 03077 • Tel. (603) 895-4761 • FAX (603) 895-6785

FEATURES

- **NAMUR Compatible Interface Mounts to all Double Acting, & Spring Return NAMUR Style Gemini Pneumatic Actuators**
- **Compact Design Occupies Minimal Space in Restricted Applications**
- **Constructed from Corrosion Resistant Materials, Suitable for a Variety of Environments**
- **4-Way NAMUR Design Allows for Easy Installation in Either Normally Open or Normally Closed Configuration**
- **DIN Style Operating Coil Available in Many of the Popular AC and DC Voltages**



The Gemini 3GP & 4GP Series pilot valves are the ideal operators for Gemini pneumatic actuators. A single air connection and DIN style electrical connection are all that is required to complete the automated ball valve package.

The GP Series utilizes a flush mount NAMUR compatible interface to provide a space efficient design which quickly

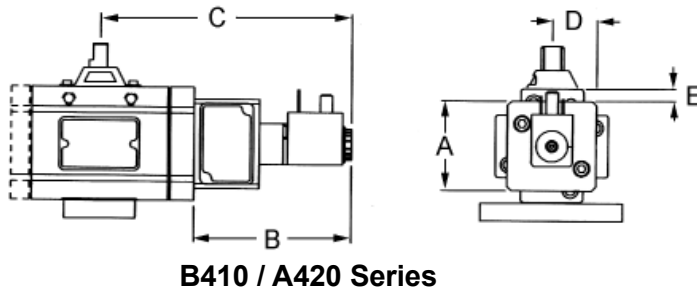
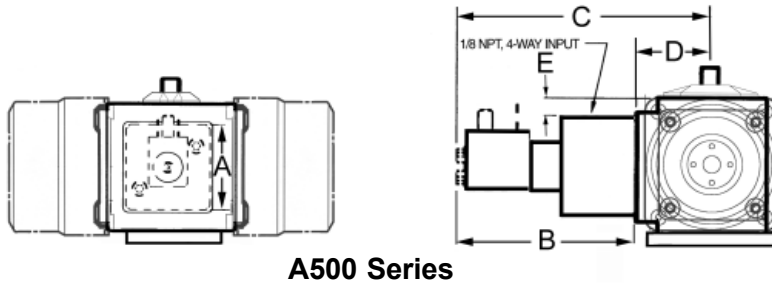
and easily mounts to all Gemini NAMUR style actuators. The symmetrical design of the 4-way NAMUR interface allows the ball valve to be configured to normally open or normally closed operation.

The GP Series is constructed from corrosion-resistant materials including a Teflon impregnated, hard coat anodized aluminum body, stainless steel spool and glass reinforced Zytel[®]

operator body to ensure long, trouble free life in a variety of environments.

Consistent with Gemini A500 Series actuators, the GP Series operates between 50 - 125 psi. The Mini-DIN style operating coil is available in a variety of popular voltages and can be adapted to conduit, strain relief, wire lead or automotive style connections.

Dimensions and Specifications



| Series | Actuator Model | A | B | C | D | E | Cv |
|--------|----------------|------|------|------|------|------|------|
| 4GP | B411DN | 1.94 | 3.31 | 5.16 | .935 | .25 | .075 |
| | B412DN | | | 5.23 | 1.46 | .32 | |
| | A512D | | | 6.23 | .156 | 1.62 | |
| | A421DN | | | 5.64 | 1.87 | 1.10 | |
| | A422DN | | | 5.05 | 1.46 | .32 | |
| 3GP | A512SR | 3.77 | 3.77 | 5.46 | 1.87 | 1.10 | .10 |
| | A522SR | | | 5.46 | 1.87 | 1.10 | |

Air Supply

The 4GP will operate between 50 and 125 psi (3.44 and 8.62 Bar).

Sufficient air delivery must be available to ensure dependable actuator operation. The following precautions should be observed:

- Air supply should be clean and dry. When contaminated air is a problem a filter / separator should be specified.
- Eliminate severe restrictions to air flow. The most restricted air passage anywhere in the delivery system should be no smaller than .003 in², the area of 1/16" diameter orifice.
- Tubing: For short runs up to 5 feet, 5/32" I.D. tubing is suitable; for 30 feet, 1/4" I.D.; for longer runs use 3/8" I.D. or larger.

Operating Coil

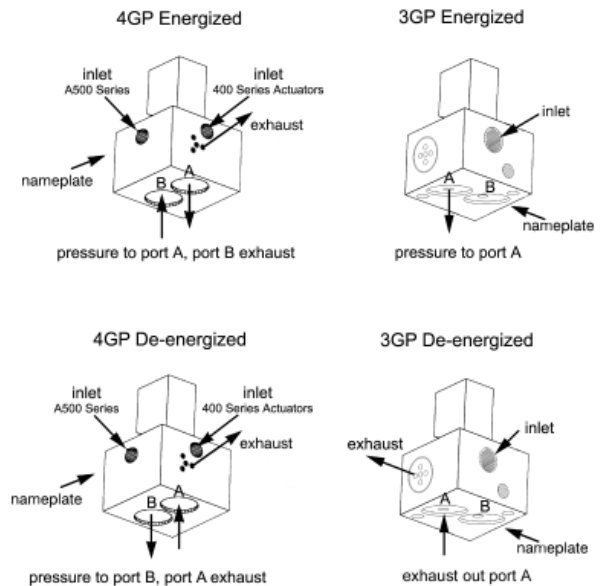
Operating coil technical data is dependent on the specific model selected, however, all standard coils as designated by the 'SC' code and conform to the following:

Wattage: 5 Watts
 Class: F, continuous duty
 Protection: IP65 (with connector)
 dusttight, water resistant
 Connection: Mini-DIN Standard

Materials

Body: PTFE / Anodized Aluminum
 Spool: 18-8 Stainless Steel
 Seals: Nitrile / Viton
 Hardware: 18-8 Stainless Steel
 Coil/Body: GF Nylon/GF Zytel

Flow Characteristics



Porting / Air Delivery

A single 1/8" NPT female connection is provided for supply. The flow characteristics for the energized and de-energized states are illustrated above.

The GP Series will mount to any NAMUR style flush mount device.

Temperature

Designed to operate in ambient temperatures between -20°F and 140°F (-28.89°C and 60°C)

Note: high temperature coils available for ambient temperatures to 350°F. Consult factory for details.



2 Otter Court
 Raymond, NH 03077

Tel. (603) 895-4761
 FAX (603) 895-6785
 www.geminivalve.com
 ISL034-0305